

Effective validation for time series icing modelling using operational SCADA data



Christian Jonsson (ABO Wind, DE), Daniel Ramos (ABO Wind, DE), Stefan Klose (ABO Wind, DE), Pau Casso (Vortex, ES), Albert Bosch (Vortex, ES), Gil Lizcano (Vortex, ES); Winterwind, Umeå, February 2019

Forming a collaboration

- **ABO Wind** develops renewable energy projects
- **Vortex** is a specialist in meteorological modelling
- A shared interest in time series icing modelling
- Our different areas of expertise make collaboration interesting

For what applications can icing model time series be useful?

- More possibilities and flexibility
- A long-term view
- Impact of ice detection systems
- Impact of ice protection systems
- Ice throw assessment
- Ice load assessment
- Meteorological context for turbine performance assessment

What metrics are useful for measuring model performance?

- Synchrony
- Amplitude
- Event cycle
- Variability
- Long-term icing class

Overview of the validation configuration

- Using SCADA data
- Central Europe and the Nordic region
- Projects with and without operational restrictions related to ice throw risk
- IEA Ice Classes 2 and 3
- Initially focus on ice accretion
- Simplified consideration of ice ablation
- Modelling and validation on a wind farm level
- **Validation as a tool to advance modelling**

Overview of the model

- The model uses WRF driven by ERA5 Reanalysis
- No on-site measurement data is needed as input
- In-cloud icing using the Thompson microphysics scheme
- Ice accretion using the Makkonen model

Test Case A – overview

- Central Europe
- High elevation, forested and complex terrain
- Public safety restrictions
- Rotor blade ice detection
- Automatic restart
- Temperature frequently around 0° C in winter
- Ice removal dominated by melting

Test Case A – contingency table statistics

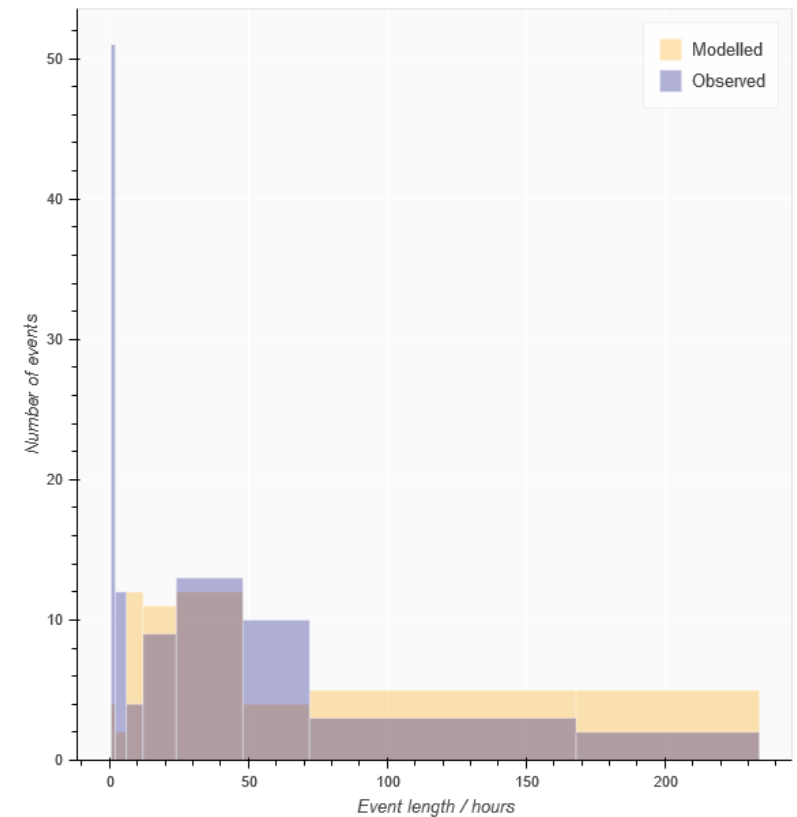
- Dichotomous (ice or no ice) prediction considering October to April for two years

		Observed		Total
		Ice	No ice	
Modelled	Ice	16%	9%	25%
	No ice	4%	71%	75%
Total		20%	80%	100%

- 80% hit rate
- +26% bias
- 87% accuracy
- 36% false alarm ratio

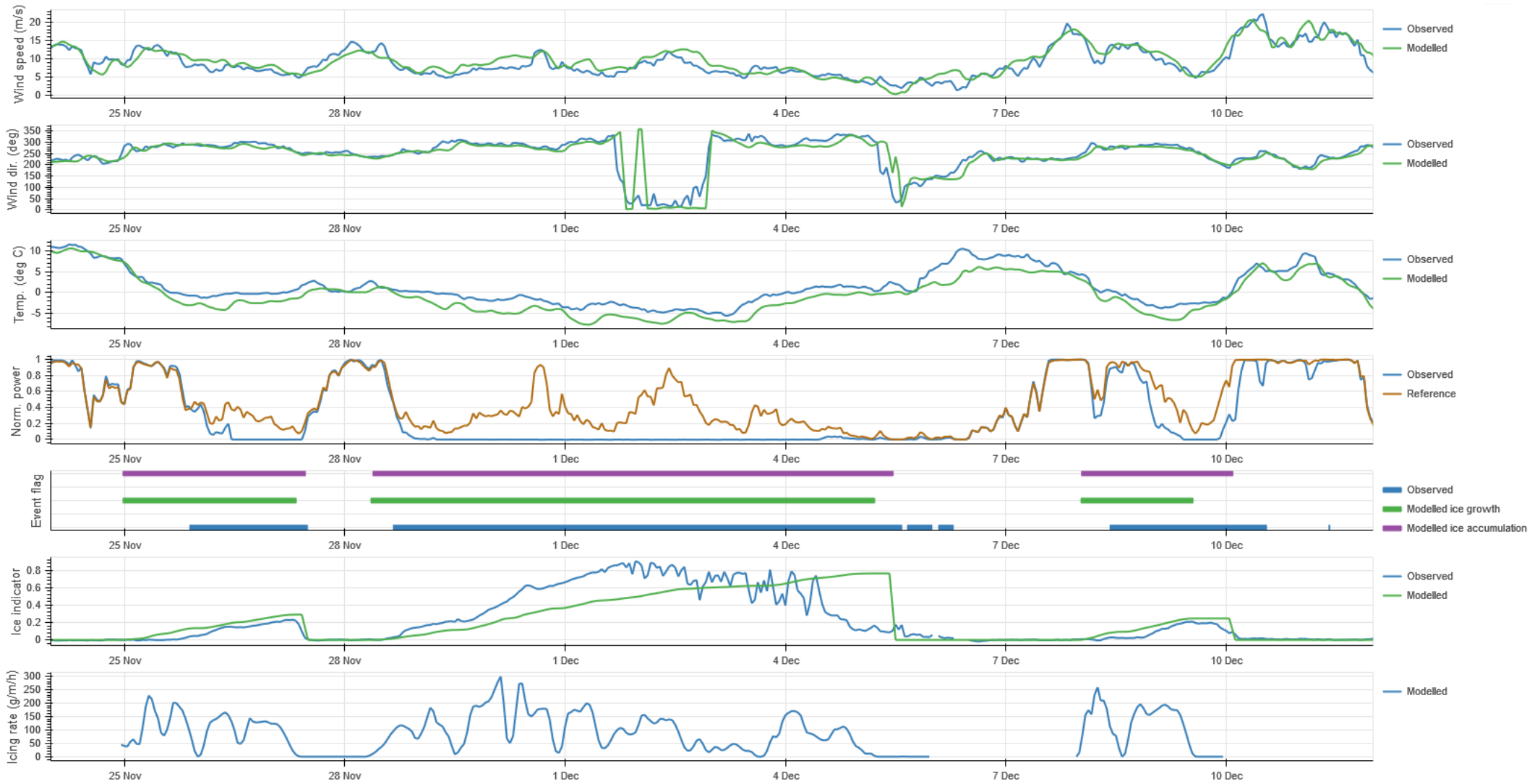
Test Case A – event length statistics

- More short events observed
- Short events challenging to capture with model
- The model predicts longer events
- Event distinction sometimes ambiguous



	Observed events	Modelled events	Hit rate	Bias
Total	104	55	80%	+26%
Below 6 h	63	8	1.4%	-71%
Above 6 h	41	47	82%	+30%
Above 24 h	28	25	82%	+27%

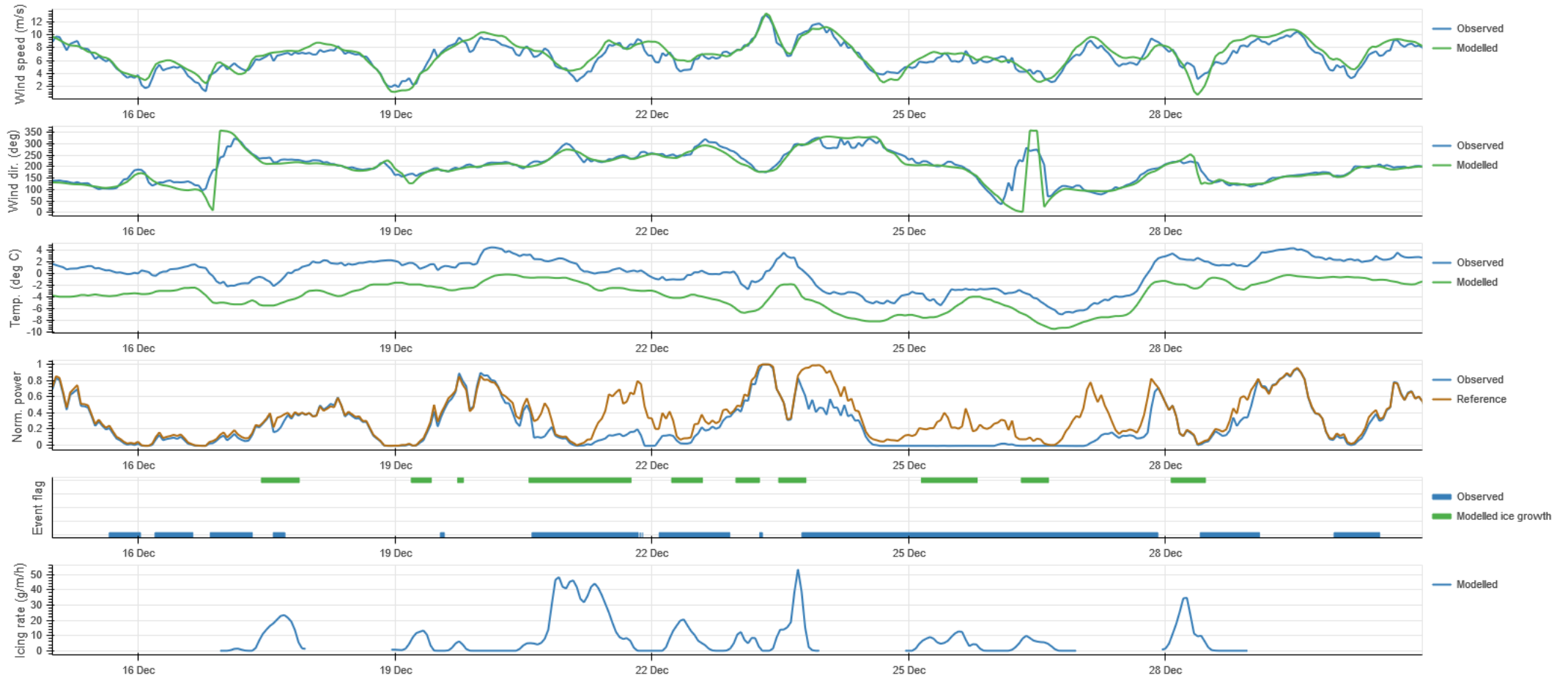
Test Case A – example time series



Test Case B – overview

- Nordic region
- Forested and simple terrain
- No operational restrictions related to ice throw
- No dedicated ice detection sensors
- Icing assessed using T19IceLossMethod
- Temperatures often below 0° C for long periods in winter
- Sublimation and wind erosion important for removal in addition to melting
- Aim was to capture start of icing events

Test Case B – example time series



Test Case B – findings

- Challenging interpretation
- Ambiguous event distinction
- Impact on turbines depends on wind speed
- Turbines susceptible during start-up
- Sublimation and wind erosion important
- Detailed assessment of operational characteristics needed
- Model results appear largely plausible from qualitative evaluation
- Some periods fit well, others less well

Test Case C – summary

- Central Europe
- Similar to Test Case A, but much less icing conditions
- During two winters, only one severe event of long duration
- Model captures this, but estimates much more icing
- Possibly due to cold bias in model
- Preliminary and under further investigation

- Encouraging start
- Detailed time series assessment give useful insights
- Different challenges for different types of sites
- Extend and refine validation framework based on initial findings
- Full modelling of ice ablation for colder sites
- Include turbine performance modelling and analysis
- Apply performance metrics on larger datasets to evaluate uncertainty drivers

Thank you for your interest – any questions?

ABO Wind

Christian Jonsson

Email: christian.jonsson@abo-wind.de

Website: www.abo-wind.com

Vortex

Albert Bosch i Mas

Email: albert.bosch@vortexfdc.com

Website: www.vortexfdc.com