

Wind Anomalies 2014

UK and Ireland

CONTEXT :

How much did your wind farm produce last year? How much can be explained by wind resource inter-annual variability?

Year-to-year variability of wind resource is a main driver of uncertainty during the pre-construction stage. Once a wind farm is in operation, monitoring wind condition departures from climatology (anomalies) provides the context for wind farm performance assessments.

This report aims to provide a regional overview to 2014 annual wind speed climate variability for the **UK and Ireland**.

All data employed in this analysis were derived from a cutting-edge atmospheric modeling technology based on zooming global Reanalysis up to different relevant scales for wind industry applications.

DATA:

This report shows 2014 annual wind speed anomalies for the UK and Ireland, computed with reference to the baseline 1985-2014 climatology period.

Annual wind speed time series at 100 m a.g.l. were obtained by downscaling global Reanalysis data to a final effective resolution of 9 km. Anomaly fields were computed as percentage of deviation from climatology.

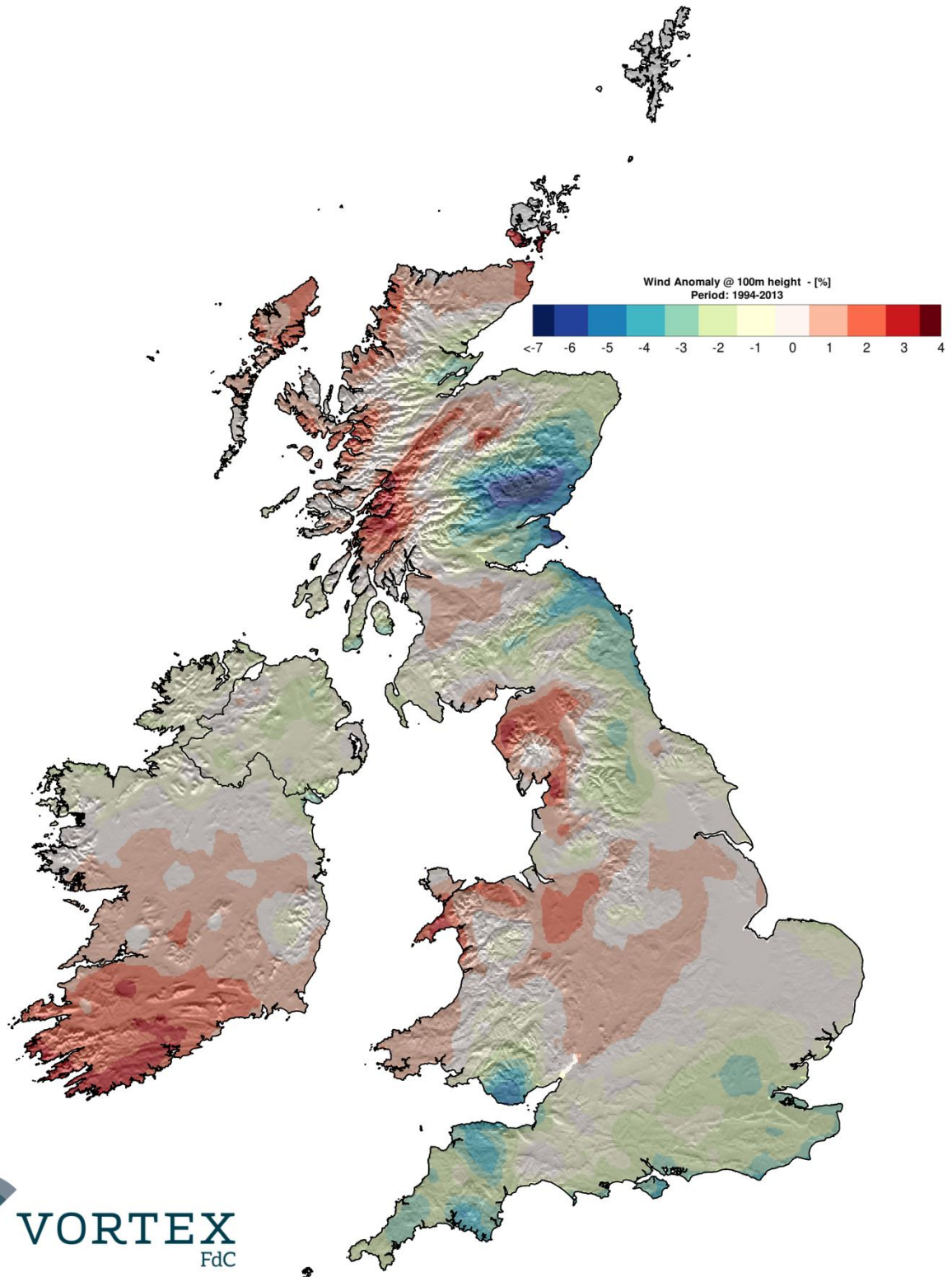
LIMITATIONS:

The final anomalies map provides general indications about annual wind condition departures at a regional scale. No site-specific variability impact information can be extracted due to the model's resolution.

Higher resolution downscaled products are required in combination with bias correction techniques, such as Vortex Remodeling, to obtain an accurate characterization of wind conditions anomaly values for wind farm project scale.

United Kingdom & Ireland

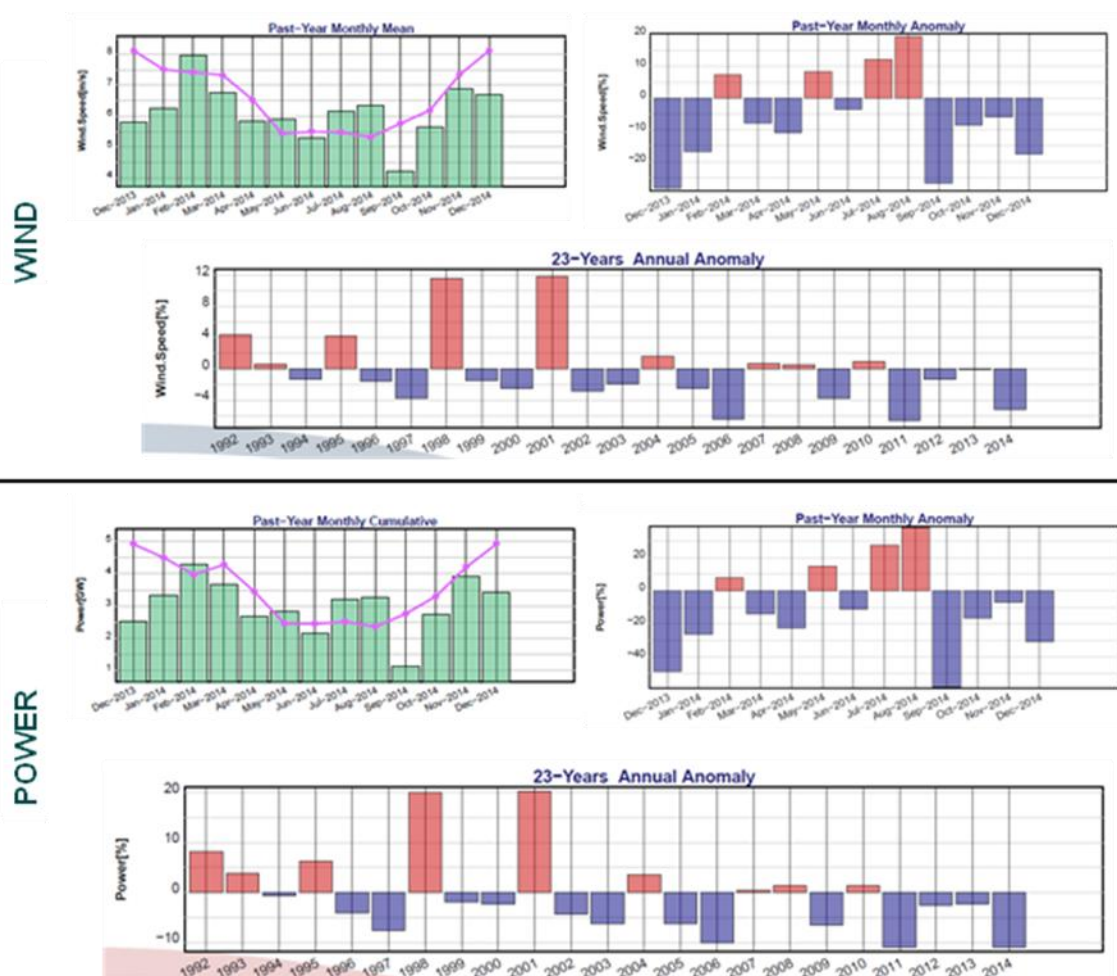
Wind Anomaly Map – 2014



VORTEX MONTHLY INSIGHT:

Monthly Insight is an enhanced tool for conducting site-specific anomaly impact studies for any given location, including wind and power production statistics. On-site measurements can be assimilated for effective bias correction and calibration using Vortex Remodeling technology.

Some samples of the information provided by site-specific Monthly Insight reports are showed below. Feel free to get in touch with us to obtain further information about INSIGHT features and capabilities.



CONTACT US for further information:

Headquarters

Vortex Factoria de Calculs

Parc Tecnologic BCN Nord
Carrer Marie Curie, 8-14
08042, Barcelona, Spain
[0034 933 543 453](tel:0034933543453)
info@vortexfdc.com

Vortex FdC Inc (NAM)

1101 Brickell Avenue
Southtower 8th Floor
Miami, Florida 33131, USA
[001 305 424 1681](tel:0013054241681)
ed.montero@vortexfdc.com

Pune (INDIA)

Shri Krishna Paradise
Sect-06, Moshi Pradhikaran, India
[091 09850952956](tel:09109850952956)
india@vortex.es

Istanbul (TURKEY)

INORES company
Kayisdagi Cad. No:3 Flora Suite&Office
Kat:20/2002
Kozyatagi Atasehir, Istanbul, Turkey
[090 2165773401](tel:0902165773401)
turkey@vortexfdc.com
www.inores.com

